

# Aggarwal Secure Overseas



## ABOUT US

One well-known producer that specializes in premium fasteners is Aggarwal Overseas. We manufacture a variety of fasteners, such as bolts, nuts, screws, washers, and other associated parts, with an emphasis on quality and accuracy.



# SOME OF OUR PRODUCTS

- NUTS
- RIVETS
- MINI FIXER
- JCB BOLTS
- T-NUTS
- FLANG BOLTS
- WASHERS
- D-NUTS
- BARREL NUTS
- BOLTS



# JCB Bolts

A JCB made of stainless steel One kind of fastener that stands out is the Allen Bolt, which is made of stainless steel and has endurance and corrosion resistance. An "Allen Bolt" is a bolt with a hexagonal socket head that is intended to be tightened or loosened with an Allen wrench, also known as a hex key. Because of their robustness and dependability under harsh conditions, these bolts are frequently found in heavy gear, including JCB equipment. They are appropriate for uses that call for corrosion and rust resistance along with a secure fastening.



# D-Nuts

In order to avoid rotation during installation, D nuts are specialised fasteners with a single flat side. They are ideal for situations where anti-rotation is crucial because of their special design, which increases stability and guarantees that the nut stays aligned.

The distinctive exterior thread of the D Nuts for Wood ensures secure locking and provides excellent resistance to pull-out caused by tensile, vibration, or torsion loads. The flange's head keeps covered surfaces from separating, and the D nut is driven too far.



# T-Nuts

A drive-in nut, sometimes called a T-nut, T-nut, or tee nut (also called a blind nut, which can also mean rivet or insert nut) is a type of nut used to fasten a workpiece made of wood, particle, or composite materials while leaving a flat surface.

Its body is long and narrow, with a flange at one end that gives it a T-like appearance. To improve retention, T-nut flanges frequently feature hooks or serrations on the prongs that dig into a wooden work piece when the bolt is tightened from the other side of the piece. which are employed in machine tools for work-holding. When combined with studs and clamps, T-slot nuts offer a versatile way to hold workpieces in place. They fit into T-section slots in the machine work-table.





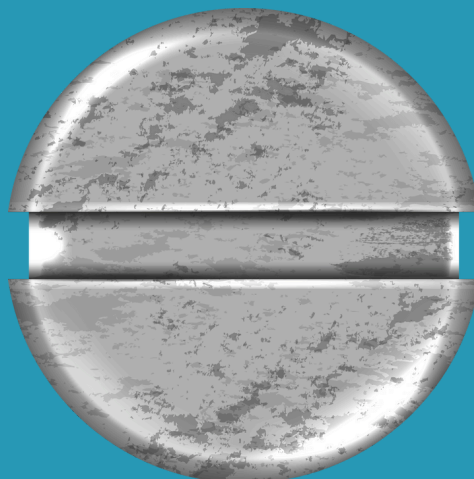
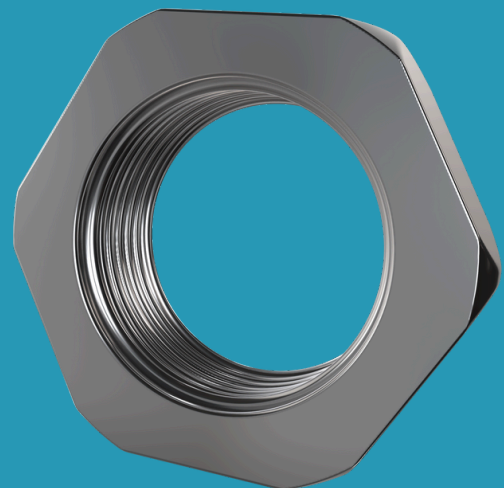
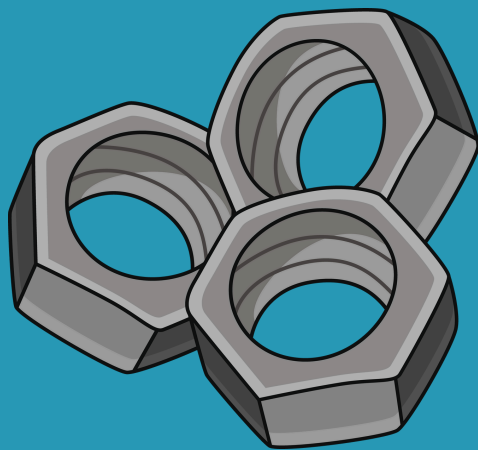
# Mini Fixer

A Small Fix Screw A little piece of hardware called a furniture connector fitting is used to firmly link or assemble furniture components. Usually made up of tiny screws, these connectors are intended to securely and firmly join shelves, furniture panels, and other parts. They are frequently utilised in the installation of modular or flat-pack furniture because they enable fast and simple connections without the need for specialised tools. Because of their reduced size and "mini fix" classification, these screws are ideal for applications involving delicate or lightweight furniture where space is at a premium or a discrete fastening is preferred.



# Nuts

We use premium raw materials to make a wide variety of nuts. Our product line is manufactured in accordance with international standards. Our collection is highly valued by our clients because of attributes like being dimensionally correct and long-lasting. Additionally, our product line comes in a variety of diameters. Additionally, we can provide our products and services at a price that leads the market.

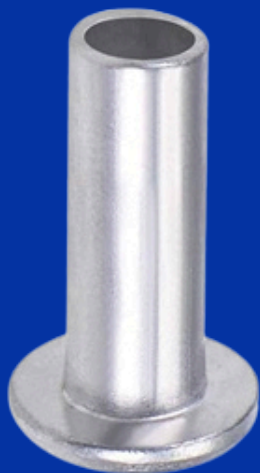




# Rivets

A rivet is a mechanical fastener that is permanent. A rivet is made up of a smooth, cylindrical shaft with a head on one end that is ready to be inserted. The tail is the end on the other side of the head.

When the rivet is installed, it is inserted into a hole that has been punched or drilled, and the tail is bucked, or upset, so that it expands to around 1.5 times the diameter of the original shaft, securing the rivet in place. Put another way, pounding flattens the "tail" material, creating a new "head" on the opposite end, giving the rivet a shape resembling a dumbbell. The deformed end of the rivet is referred to as the shop head or buck-tail, and the original head is known as the factory head.



# Hex Flange Bolts

A type of fastener known as a "hex flange bolt" is distinguished by its hexagonal head and integrated flange underneath it. Standard wrenches or sockets can be used to easily install and remove the hexagonal head, and the flange's greater bearing surface uniformly distributes the load and helps to keep the material being secured from loosening or being damaged. When a safe, vibration-resistant connection is needed, these bolts are frequently utilised in construction, equipment, and automotive applications.

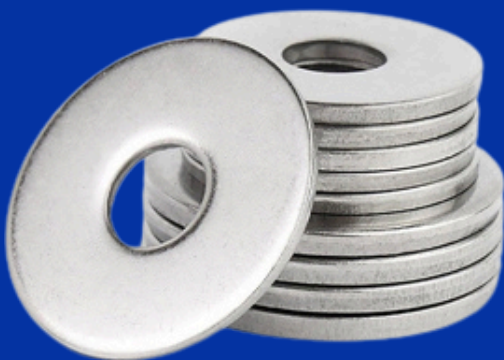
A separate washer component is not necessary because the flange can also function as a washer.



# Washers

We have a large selection of plain washers, which are widely utilised by many industries. These come in a variety of varieties, including Tab Washer in one or two tabs, Tooth Washer, Star Washer, Spring Lock Washer, Heavy Duty Spring Washer, and Plain Washer, Plain Big & Small OD washer.

Our extensive selection of washers is used in a variety of sectors. Instead of settling for a regular part, these washers are particularly engineered to meet the joint specifications. In addition, these are available in a variety of sizes and shapes to meet the needs of our esteemed customers.



# Barrel Nuts

Dowel nuts, another name for barrel nuts, are speciality fasteners made to firmly attach several pieces. Their distinctive cylindrical shape and perpendicular threading set them apart from conventional nuts and provide a number of advantages in applications where both structural integrity and aesthetics are crucial.

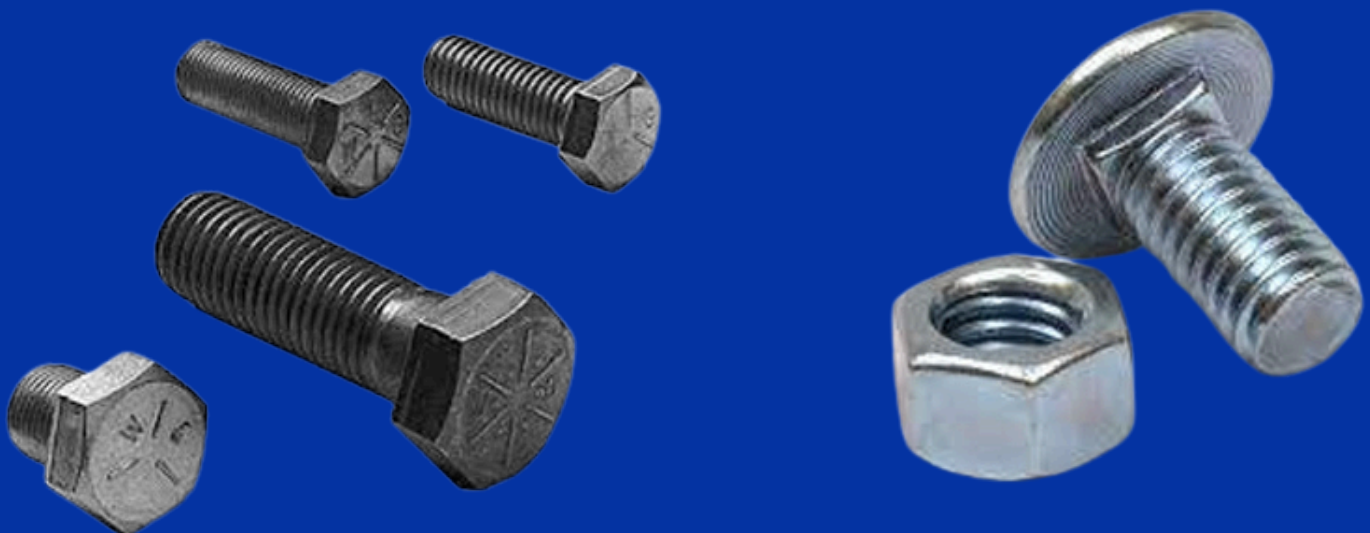
Usually more than an inch long, barrel nuts are longer than regular nuts. They are perfect for situations where a flush finish is sought because of their cylindrical or semi-cylindrical shape, which enables them to fit neatly into pre-drilled holes. To increase stability and load-bearing capability, barrel nuts include threading that passes through the centre perpendicularly.



# Bolts

We offer our clients a unique selection of metal bolts of the highest calibre. These goods are made with premium raw materials and are much valued. Steel bolts, Hexagon head bolts, square U bolts, drop-in anchor bolts, eye bolts, hex bolts, carriage bolts, expansion bolts, gravity bolts, high tensile hexagon bolts, hex flange bolts, nip bolts, plough bolts, round head square neck bolts, sleeve metal expansion bolts, socket shoulder bolts, square head bolts, square neck bolts, foundation bolts, structural bolts, and stud bolts are among the products that are manufactured and exported.

We provide a range of bolts in metric sizes up to 900 mm in lengths from M3 to M75 and in imperial sizes up to 36". Our speciality is custom fasteners, and we have created numerous novel bolt types for our diverse clientele worldwide.





# Contact Us

**Mobile : 98767-36740**

**Email : [aggarwaloverseas24@gmail.com](mailto:aggarwaloverseas24@gmail.com)**

**Add : Industrial Area-A, RK Road, Near Cheema Chowk,  
Ludhiana, 141003, Punjab**







# Learn More At

<https://www.aggarwaloverseas.in>